



IceCelles 25-26

Kickoff Meeting

October 21, 2025



Topics to be Covered



01

Team Essentials

Calendar
Uniform
Handbook

02

Volunteering and Events

We are strongest when we all work together!

03

Club Financials

This keeps our club running

04

Expectations

Acknowledgement of Responsibilities



Team Essentials



Website and Team Calendar

All your information will be on the Icettes Website.

<https://www.icettes.com/>

Handbook

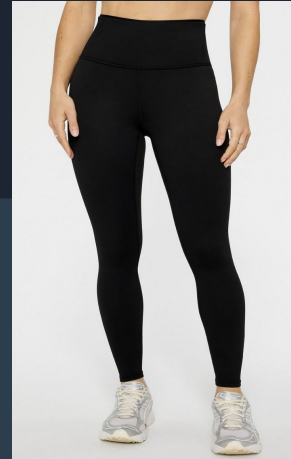
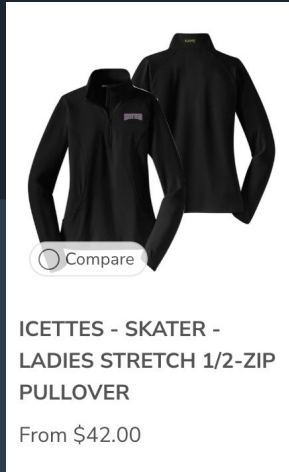


Your first source for all Icettes info.

Scan the QR code and save it on
your phone as a link.

(A link is also available on the website.)

Uniform



<https://elsmoresports.com/collections/icettes>

Blanket with Icettes & skater's name embroidered (optional) = \$35



Volunteering and Events

We are a small group of parents who work hard for the success of our skaters! We all are in this together!



Team Building Events

Costume Skate Party - Friday, Nov 7th (6:30-8:30pm) Eagan Civic Arena

Camp Sacajawea - Sunday, Nov 23rd (3-7pm)

Craft Fair - Saturday, Nov 29th (9am-4pm) Rosemount American Legion

Team Dinner - Sunday, Feb 1st (6:30-8pm)

Competitions

Frosty Blades - Blaine, MN

February 6

Varsity Team Comps, JV Team Comps, Synchro Teams, Production (No Individual events at this competition.)

Bold Ice Challenge - Minneapolis, MN

Dates to be Determined

Participation will be dependent upon date as it may conflict with the Ice Show

****Winter Classic** - Valencia, CA (Optional Competition) February 13 - February 16

Varsity Team, JV Team, Synchro Teams, Production, Individual, Duet, Ensembles are available

Winter Classic



Event Dates: February 13 – 15, 2026

Location: The Cube- Ice and Entertainment Center Valencia, CA

Hotel: FOR SKATERS ONLY! Parents please choose an alternate hotel.

Courtyard by Marriott Santa Clarita/Valencia

Address: 28523 Westinghouse Place, Valencia, CA 91355

Distance to The Cube: ~2.5 miles (approx. 7-minute drive)



Winter Classic Flight Info

***** MEET AT AIRPORT BY THE SUN COUNTRY TICKET COUNTER TERMINAL 2
7:30AM

Thursday 2/12/2026

WHEELS UP! 9:42 AM ARRIVING IN LAX AT 11:49AM (FLIGHT SY421)

Sunday 2/15/2026

RED EYE 11:59PM DEPARTING LAX and ARRIVING at MSP 5:33AM ON 2/16/2026 (FLIGHT SY430)

Winter Classic Plans

Thursday: Coach bus from LAX to Santa Monica Beach. Free day at the beach and team dinner somewhere in this area. Coach bus back to hotel in the evening.

Friday-Sunday: The majority of our time will be spent at The Cube as a team competing in events.



Winter Classic Cost

Estimated Cost: under \$1000, final amount can not be determined until we know how many skaters will attend.

Due Date: First Trip deposit due December 1st - \$500

Final Payment is due January 15. * will not exceed \$500

**The price includes ALL meals, hotel, flight, transfers, and cash for the Santa Monica boardwalk free day.

Fundraising

Individual Fundraising Goal

\$12,000* for the team = \$300/skater achieved by any combination of:

- Vertical Raise
- Pampered Chef
- Papa Murphy's cards
- Cub Foods bagging
- Buy-out

Raise Right will be 100% skater income to apply to their personal expenses.

*Fundraising in excess of goals/expenses will be directly applied to trip expenses for the 2026-27 season.





Vertical Raise

- Our biggest fundraiser in the club
- Direct Drive Fundraiser
- Starts November 14th!
- Students need 20 Email addresses! More information to come!

Dinner will be donated to the skaters from Raising Canes!



Raise Right

Raise Right enrollment code: **BE28767F56437**

100% of money earned goes to skater account

Need a parent coordinator in order to run the program.

[RaiseRight Official Page](#)



Achieving Dreams

<https://achievingdreamsmn.org/about-us/>

Venues Include:

Grand Casino Arena

US Bank

Target Field

Huntington Bank

Allianz Field

Committee Leads and support



Ice Monitoring

This year we are asking families to monitor at each practice. This helps our coaches to focus on skaters and support if there are other needs on the ice.

We are asking families to sign up for two shifts for this season.

The sign up will be ready in a few weeks prior to the season starting. The board will cover try-out week.

Volunteers for early morning practices will be responsible for picking up a small breakfast for the skaters. The booster club will reimburse up to a certain amount TBD.

[Ice monitor sign up link](#)*

*Ice times are subject to change. Please check the Icettes calendar for updates.

Club Financials

Current bank account balance \$49,711*

2024-25 Expenses \$36,793

2024-25 Income \$49,899

2024-25 budget surplus \$13,106**

*Goal to start each season with funds to cover season expenses

**\$10,000 of this to be applied to 2025-26 trip expenses



Expenses

2025-26 forecasted

Expenses

Competition fees	\$10,000
Team building events	\$5000
Ice show	\$9000
Coaching fees	\$9000
Office/Admin	\$1000
Team promotion	\$1000
Costumes	\$2000
ISI fees + Misc	\$1,500
Total Expenses	\$38,500

Annual Expense/38 skaters ~\$1,000 per skater

Booster fee/skater \$350

Fundraising/skater \$650 - to be achieved through a combination of team and individual fundraising.

Income

2025-26 Income forecast

Booster fee*	\$13,300
Sponsorships	\$6,000
Ice show	\$8,000
Silent auction	\$2,000
Craft sale	\$2,000
Total Team Income	\$31,300

*Booster fee is due December 15

Vertical Raise	\$8,500
Papa Murphy's	\$2,000
Cub bagging	\$1,500
Total Individual Fundraisers**	\$12,000
Total Income	\$43,300***

**Fundraisers that apply toward skater \$300 required amount

***Income >Expenses potential contribution to 2026-27 season trip expenses.

Corporate Matching

Corporate Matching is when a company matches an employee's monetary donation to a non-profit organization.

This can be a 1:1 donation or at times it could be 2:1 or 3:1.

Example: Your fundraising total is \$300 if you monetarily donate that your company could make that possibly \$600, \$900 or \$1200.



Expectations

Icettes is a team sport and we count on every member to be in attendance.

Icettes is a district wide sport that follows all school, district, and Minnesota State High School League policies when it comes to student athletes.

Social Media responsibility is essential for the well-being of the team and your teammates.

Communicate with your coaches: Absences, issues, health and wellbeing, they can't help you unless they know what is happening.

Acknowledgement of Responsibility



We appreciate your support in helping make each skater the best they can be.

Please review the AoR document with your skater. Initial each statement as you go and sign it at the bottom before giving it to a board member.



Thanks!

Do you have any questions?

Contact the Booster Board at
Icettes.Booster.Club@gmail.com

CREDITS: This presentation template was created by **Slidesgo**,
including icons by **Flaticon** and infographics & images by **Freepik**





A picture is worth a thousand words





Resources



Did you like the resources on this template? Get them for free at our other websites:

Photos

- Line from ice skates
- Back view woman skating on one leg

Vectors

- Figure skating banners
- Dancing on the ice
- Winter sport banners
- Winter sport banners with red ice skates
- Ice skating illustration

Icons

- Winter Sports icon pack | Lineal

Instructions for use

If you have a free account, in order to use this template, you must credit [Slidesgo](#) by keeping the [Thanks](#) slide. Please refer to the next slide to read the instructions for premium users.

As a Free user, you are allowed to:

- Modify this template.
- Use it for both personal and commercial projects.

You are not allowed to:

- Sublicense, sell or rent any of Slidesgo Content (or a modified version of Slidesgo Content).
- Distribute Slidesgo Content unless it has been expressly authorized by Slidesgo.
- Include Slidesgo Content in an online or offline database or file.
- Offer Slidesgo templates (or modified versions of Slidesgo templates) for download.
- Acquire the copyright of Slidesgo Content.

For more information about editing slides, please read our FAQs or visit our blog:

<https://slidesgo.com/faqs> and <https://slidesgo.com/slidesgo-school>

Fonts & colors used

This presentation has been made using the following fonts:

Comforter

(<https://fonts.google.com/specimen/Comforter>)

Didact Gothic

(<https://fonts.google.com/specimen/Didact+Gothic>)

#ffffff

#1c2531

#2c3e4e

#486575

#c7c7c7

#493e3e

#6f5a59

#88b5bc

#c7f2f2

#282f4b

Storyset

Create your Story with our illustrated concepts. Choose the style you like the most, edit its colors, pick the background and layers you want to show and bring them to life with the animator panel! It will boost your presentation. Check out **how it works**.



Pana



Amico



Bro



Rafiki



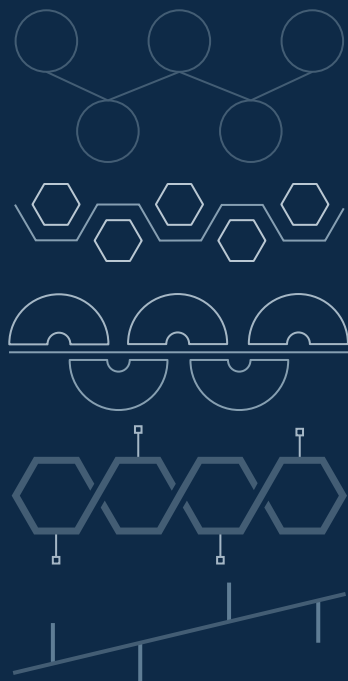
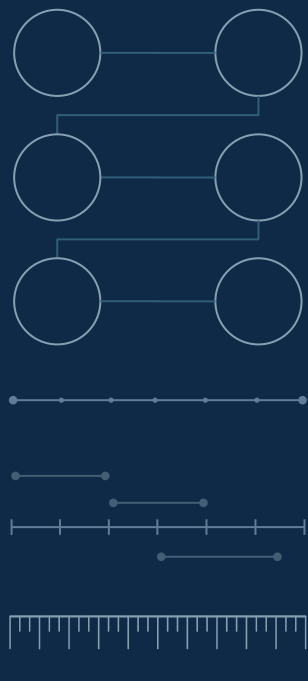
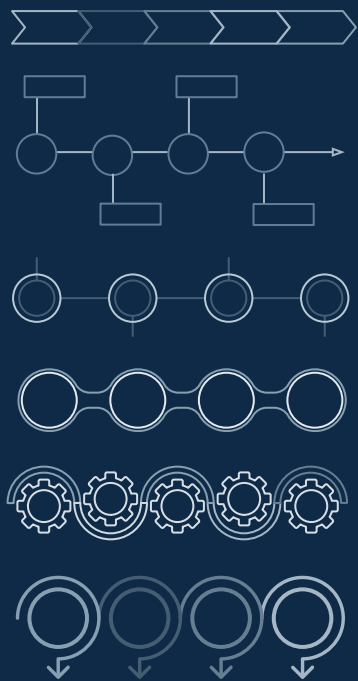
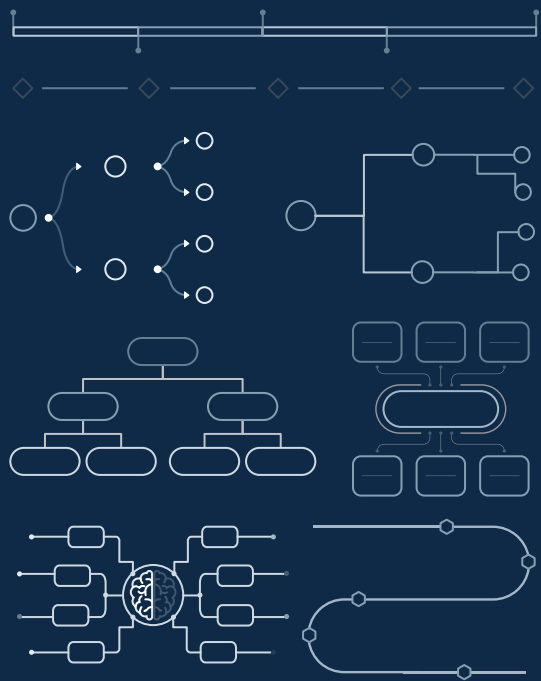
Cuate

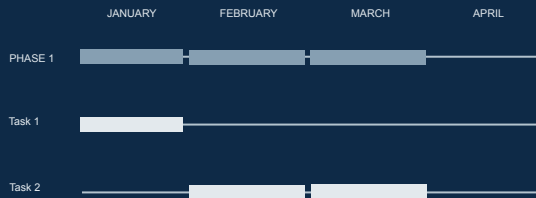
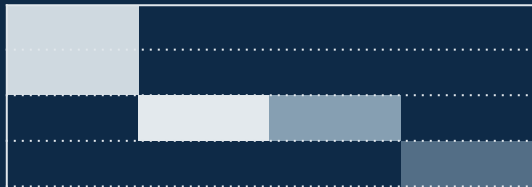
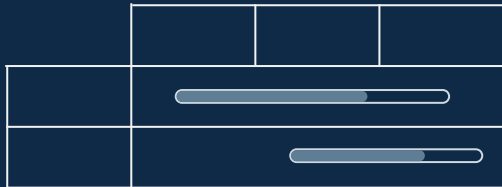
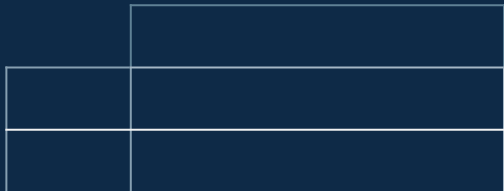
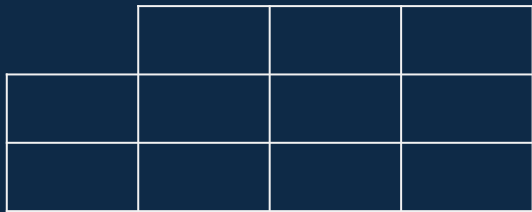
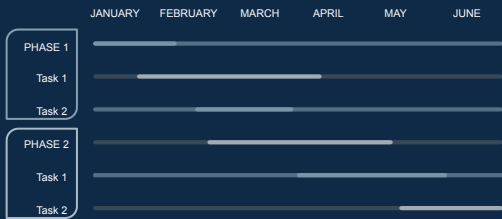
Use our editable graphic resources...

You can easily **resize** these resources without losing quality. To **change the color**, just ungroup the resource and click on the object you want to change. Then, click on the paint bucket and select the color you want. Group the resource again when you're done. You can also look for more **infographics** on [Slidesgo](#).

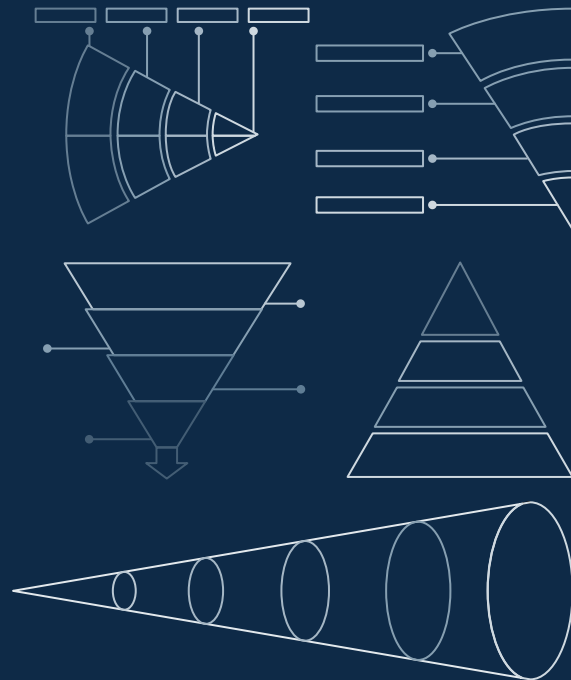
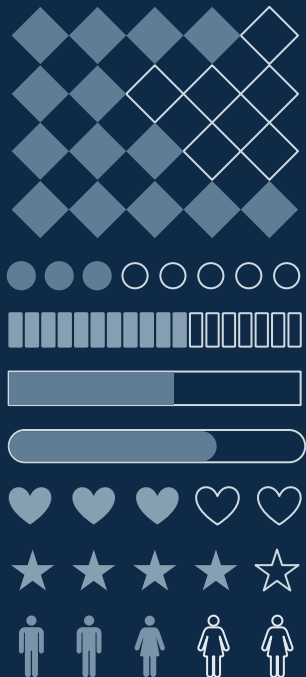
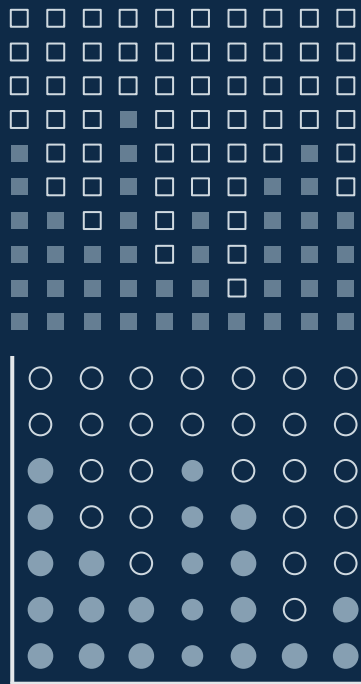












...and our sets of editable icons

You can **resize** these icons without losing quality.

You can **change the stroke and fill color**; just select the icon and click on the **paint bucket/pen**.

In Google Slides, you can also use **Flaticon's extension**, allowing you to customize and add even more icons.



Educational Icons



Medical Icons



Business Icons



Teamwork Icons



Help & Support Icons



Avatar Icons



Creative Process Icons



Performing Arts Icons



Nature Icons



SEO & Marketing Icons



